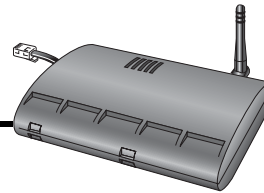


Weather Envoy

Wireless and Cabled Models



6316
6316C

Vantage Pro2™

The Wireless Weather Envoy (# 6316) and Cabled Weather Envoy (# 6316C) provide a quick and easy way to get weather data onto your Windows 95 or later computer or Macintosh OS X computer using our WeatherLink software. WeatherLink allows you to log weather data, display graphs and plots on your computer, export weather data to a spreadsheet, and to upload weather information to the Internet.

The Weather Envoy includes sensors to measure inside temperature, inside humidity, and barometric pressure. It is intended to be used in conjunction with our Integrated Sensor Suite (ISS) to report outside temperature and humidity, rainfall, wind speed and direction. Using optional sensors, the Weather Envoy can also report solar and UV radiation. The Wireless Weather Envoy can be used in conjunction with our Wireless Temperature, Wireless Temperature and Humidity, and Wireless Leaf and Soil Moisture/Temperature stations. All wireless products communicate via FCC-certified, license-free transmitters and receivers. The Cabled Weather Envoy is connected directly to the ISS via a cable and cannot be used with any other sensor stations and cannot be used with the Vantage Pro2 console. The Cabled Weather Envoy may be powered by batteries or by the included AC-power adapter.

Please refer to the Wireless or Cabled Vantage Pro2 Weather Station Spec Sheets for detailed information on the Vantage Pro2 ISS data.

General

Operating Temperature	+14° to +140°F (-10° to +60°C)
Storage Temperature	-5° to +158°F (-20° to +70°C)
Current Draw, Wireless	0.90 mA average, 20 mA peak, (plus 0.125 mA for each optional wireless transmitter in use) at 4 to 6 VDC
Current Draw, Cabled	10 mA average, 15 mA peak at 4 to 6 VDC
AC Power Adapter.	5 VDC, 200 mA, regulated
Batteries	3 AA-cells
Battery Life, Wireless	up to 4 months
Battery Life, Cabled.	up to 1 month
Connectors	Modular RJ-11
Cable Type	4-conductor, 26 AWG
Housing Material	UV-resistant PVC plastic
Dimensions (length x width x height)	6.5" x 1.5" x 3.75" (165 mm x 38 mm x 95 mm)
Weight (with batteries)	0.58 lbs. (0.26 kg)

Communication (# 6316 Only)

Transmit/Receive Frequency.	US Models: 902-928 MHz FHSS, Overseas Models: 868.0 - 868.6 MHz FHSS.
ID Codes Available	8
Output Power	902-928 MHz FHSS: FCC-certified low power, less than 8 mW, no license required 868.0 - 868.6 MHz FHSS. CE-certified, less than 8 mW, no license required
Range	
Line of Sight	up to 1000 feet (300 m)
Through Walls	200 to 400 feet (75 to 150 m)

Sensor Inputs

RF Filtering	RC low-pass filter on each signal line
------------------------	--

Sensor Data From Envoy

Barometric Pressure (sensor located in Envoy)

Resolution and Units	Measured in 0.01" Hg. Other units are converted from Hg and rounded to nearest 0.1 mm, 0.1 hPa, 0.1 mb.
Corrected Range	26.00" to 32.00" Hg, 660.0 to 810.0 mm Hg, 880.0 to 1080.0 hPa/mb
Uncorrected Range	16.00" to 33.50" Hg, 406.0 to 850.0 mm Hg, 542.0 to 1130.0 hPa/mb
Elevation Range	-1500' to +15,300' (-460 m to 4670 m). The console screen limits display of lower elevation to -999' when using feet as elevation unit.
Uncorrected Reading Accuracy	±0.03" Hg (±0.8 mm Hg, ±1.0 hPa/mb) (at room temperature)
Sea-Level Reduction Equation Used	United States Method employed prior to use of current "R Factor" method
Equation Source	Smithsonian Meteorological Tables
Equation Accuracy	±0.01" Hg (±0.3 mm Hg, ±0.3 hPa/mb)
Elevation Accuracy Required	±10' (3m) to meet equation accuracy specification
Overall Accuracy	±0.04" Hg (±1.0 mm Hg, ±1.4 hPa/mb)
Trend (change in 3 hours)	Change ±0.6" (2.0 hPa/mb, 1.5 mm Hg) = Rapidly Change ±0.2" (0.7hPa/mb, 0.5 mm Hg) = Slowly
Trend Indication	5 position arrow: Rising (rapidly or slowly), Steady, or Falling (rapidly or slowly)
Update Interval	15 minutes
Current and Historical Data	Based on WeatherLink display
Alarms	High Threshold from Current Trend for Storm Clearing (Rising Trend) Low Threshold from Current Trend for Storm Warning (Falling Trend)
Range for Rising and Falling Trend Alarms	0.01 to 0.25" Hg (0.1 to 6.4 mm Hg, 0.1 to 8.5 hPa/mb)

Humidity

Inside Relative Humidity (sensor located in Weather Envoy)

Resolution and Units	1%
Range	0 to 100% RH
Accuracy	±5%
Update Interval	1 minute
Current and Historical Data	Based on WeatherLink display
Alarms	High and Low Threshold from Instant Reading

Temperature

Inside Temperature (sensor located in console)

Resolution and Units	Current Data: 0.1°F or 1°F or 0.1°C or 1°C.°(nominal). Celsius is converted from Fahrenheit and rounded to the nearest 0.1° or 1°C. Historical Graph Data and Alarms: 1°F or 1°C. Celsius is converted from Fahrenheit and rounded to the nearest 1°C.
Range	+32° to +140°F (0° to +60°C)
Sensor Accuracy	±1°F (±0.5°C) typical
Update Interval	1 minute
Current and Historical Data	Based on WeatherLink display
Alarms	High and Low Thresholds from Instant Reading

Clock

Resolution	1 minute
Units	Time: 12 or 24 hour format (user-selectable) Date: US or International format (user-selectable)
Accuracy	±8 seconds/month
Adjustments	
Time	Automatic Daylight Savings Time (for users in North America, Europe and Australia that observe it in AUTO mode, MANUAL setting available for all other areas)
Date	Automatic Leap Year

Package Dimensions

Product #	Package Dimensions (Length x Width x Height)	Package Weight	UPC Codes
6316	12.0" x 7.0" x 3.0" (299 mm x 172 mm x 76 mm)	1.2 lbs. (0.56 kg)	011698 00749 3
6316EU			011698 00770 7
6316UK			011698 00771 4
6316C			011698 00757 8
6316CEU			011698 00789 9
6316CUK			011698 00790 5